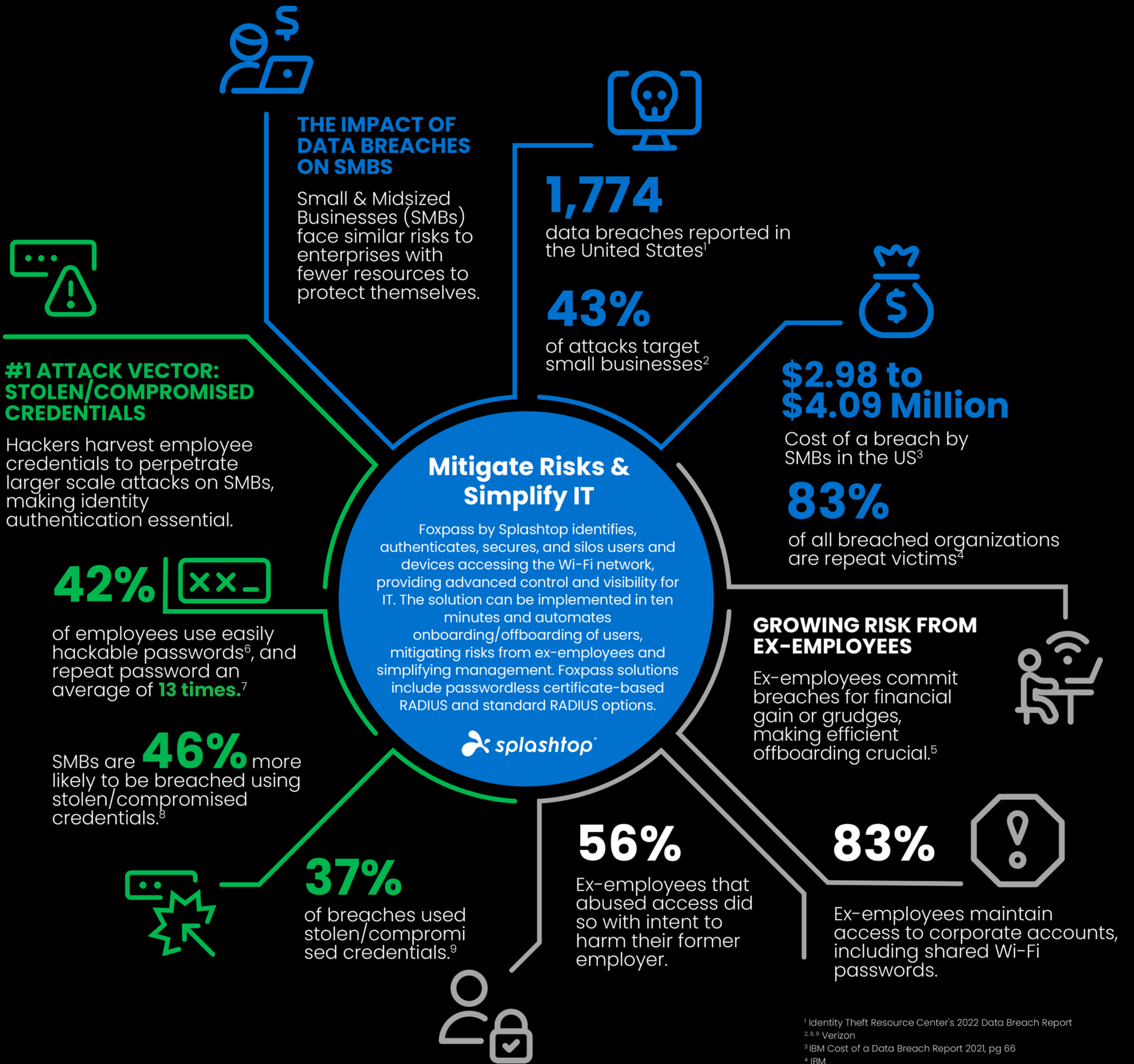




Think Your Wi-Fi Network is Secure? Think Again.

Many Wi-Fi protections are woefully inadequate or difficult and time-consuming to manage. Learn how enabling RADIUS authentication on Wi-Fi can simplify network management and protect you from escalating threats. Leverage your corporate Google and Microsoft accounts for secure password-based access or passwordless certificate-based authentication (CBA).



¹ Identity Theft Resource Center's 2022 Data Breach Report
^{2,8,9} Verizon
³ IBM Cost of a Data Breach Report 2021, pg 66
⁴ IBM
⁵ Beyond Identity 2022
⁶ Bitwarden
⁷ LastPass

Automate your network security with Foxpass from Splashtop.
splashtop.com/lp/foxpass-try

Supports Compliance with

