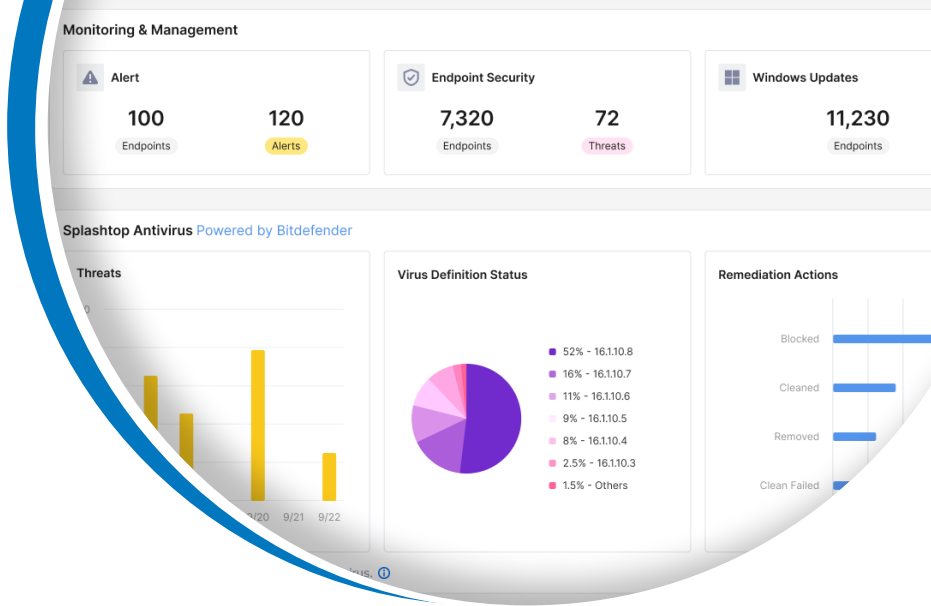




# Splashtop Autonomous Endpoint Management

Empower your IT team with real-time control and automation.



Streamline IT operations, automate routine tasks, and ensure your endpoints are secure, up-to-date, and compliant – all from within the Splashtop console. Get the endpoint management capabilities you need without the complexity and cost of full-scale RMM or UEM platforms.

Available as an add-on with Remote Support licenses

## Key features and benefits

- **Real-Time Updates with Greater Control:** Deploy patches instantly to address zero-day vulnerabilities and critical issues, with customizable scheduling and version management for flexibility.
- **Endpoint Policies:** Enforce tailored security and configuration policies, including flexible patching rules like pre-approved versions, ring updates, and automated approvals.
- **Patch Management:** Automate updates for operating systems and third-party software while ensuring critical patches are applied promptly on Windows and macOS.
- **Proactive Alerts and Remediation:** Identify and resolve issues quickly with configurable alerts and automations via smart actions.
- **1-to-Many Actions:** Streamline operations and remediate issues by scheduling or instantly executing tasks simultaneously across multiple endpoints.
- **Background Tools:** Access diagnostic tools such as task manager, registry editor, device manager, service manager and remote command without interrupting the end-user or starting a remote session.
- **Inventory Reporting:** Access detailed reports on system, hardware and software inventory for improved visibility, auditing and compliance.
- **Dashboard Insights:** Monitor endpoint health, patch statuses, and compliance through a centralized dashboard with actionable insights and detailed logs.
- **Endpoint Security Dashboard:** Centralize endpoint protection with real-time threat detection, automated response, antivirus management for Splashtop AV and others.

Learn more at [Autonomous Endpoint Management Add-On – Splashtop](#)

## Who benefits

- **IT Administrators:** Streamline IT workflows by managing endpoints, automating updates, securing endpoints and addressing issues proactively from one console.
- **IT Support Teams:** Provide efficient, non-disruptive support with background tools, centralized reporting, and diagnostic capabilities.
- **Small to Mid-Sized Businesses (SMBs):** Access endpoint management without the complexity or cost of full-scale RMM solutions.
- **Hybrid and Remote Teams:** Secure and manage distributed endpoints with minimal effort, ensuring productivity and compliance across locations.

**“Our reliance on Intune for some endpoint management functionalities is supplemented by Splashtop, which fills critical gaps, including better visibility into and more control over software updates, and better documentation. In one platform, we are able to troubleshoot issues on any remote devices, proactively monitor systems, automate software patching, and ensure compliance.”**

**IT Manager**

pb2 architecture + engineering

## Plans and Pricing

The Autonomous Endpoint Management capabilities are exclusively available as an add-on to Splashtop Remote Support plans.

### SOS

- Access unlimited attended computers and mobile devices.
- Access up to 10 or 300 unattended computers per license, based on your selected plan.
- With each license, get access to additional unattended computers.

### Enterprise

#### Get everything in SOS plus:

- Enhance security with SSO, granular access controls, IP whitelisting, cloud recording and more
- Level up IT support with service desk, unattended Android access, APIs and more.

**Pricing:** Autonomous Endpoint Management add-on is available for **\$259/year/concurrent user**. Contact the [Splashtop Sales Team](#) or visit [Splashtop Enterprise](#) or [Splashtop SOS](#) to get started.

## Why Choose Splashtop?



### Centralized Endpoint Management

Streamline IT operations with a single intuitive platform to manage all endpoints, monitor health, and ensure compliance.



### Cost Optimization

Reduce costs by complementing existing systems and eliminating the need for costly RMM tools.



### Enhanced Endpoint Security

Proactive threat prevention, automated policy enforcement, and real-time patch management for robust protection.



### Operational Efficiency

Quickly identify and resolve issues with smart alerts and automated tasks across multiple endpoints.



### Unified IT Management

Combine remote access and support with endpoint management to secure, update, and maintain devices seamlessly across hybrid and remote environments.